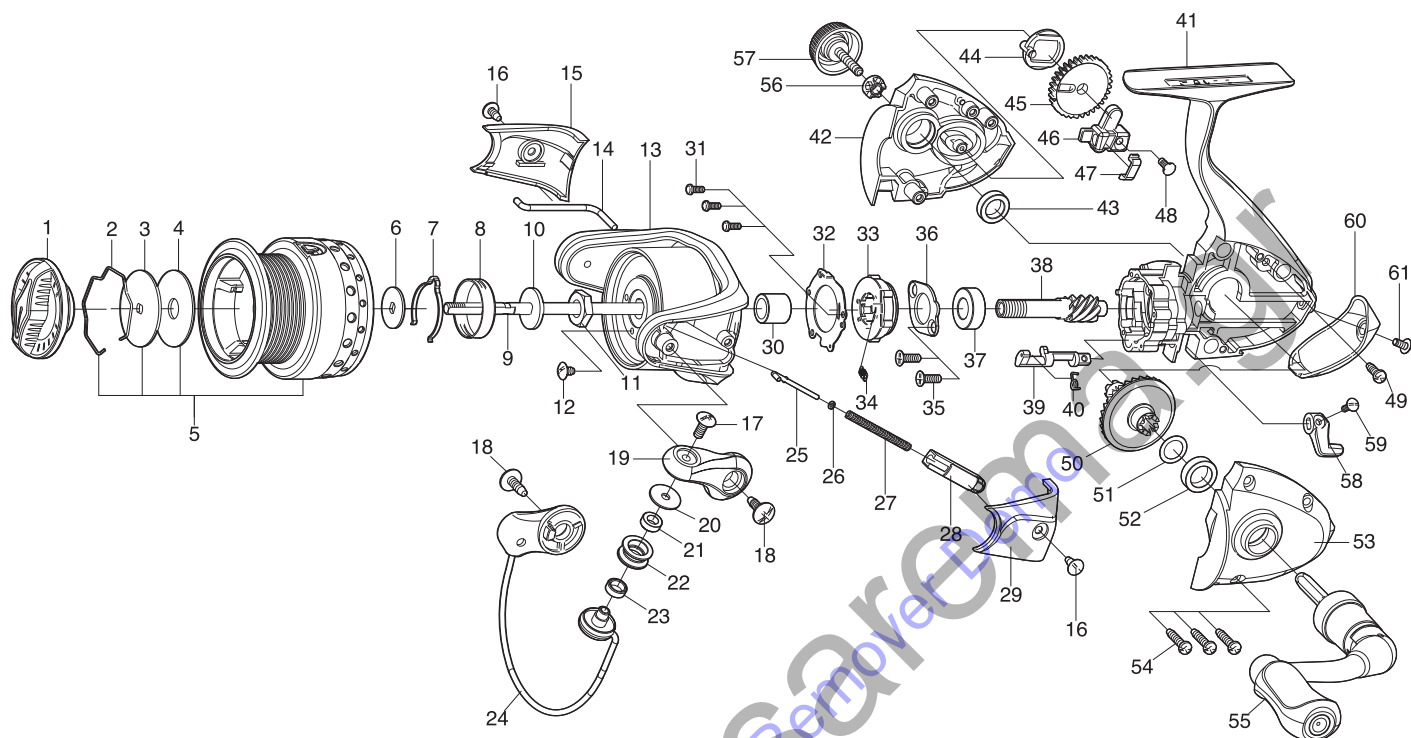




SPINNING REEL

DYNASPIN

GQ2000 / GQ2500



Key NO.	Parts No.	Parts name	Key NO.	Parts No.	Parts name
1	2YD-089-04	DRAG KNOB ASSEMBLY	33	2YZ-023-01	ONE-WAY CLUTCH BEARING ASSEMBLY
2	2E4-034-01	DRAG WASHER RETAINER	34	2Q2-016-01	SPRING
3	2W2-071-01	KEY WASHER	35	2E2-052-02	F26M-080 SCREW
4	2W1-226-01	080-260 WASHER	36	2F5-212-01	BEARING RETAINER
5	2YT-413-04	SPOOL TOTAL ASSEMBLY	37	2Z1-003-05	714-5 BALL BEARING
6	2W2-020-01	KEY WASHER	38	2G2-131-01	PINION GEAR
7	2L3-014-01	CLICK LEAF SPRING	39	2A2-088-01	ANTI-REVERSE CAM
8	2F8-013-01	CLICK LEAF SPRING HOLDER	40	2Q3-102-01	ANTI-REVERSE SPRING
9	2M3-123-01	MAIN SHAFT	41	2YB-211-05	BODY ASSEMBLY
10	2W2-015-01	KEY WASHER	42	2B2-097-06	BODY COVER ( R )
11	2E3-007-01	ROTOR NUT	43	2Z1-009-05	711-3 BALL BEARING
12	2E1-036-01	B26-040 SCREW	44	2M2-018-01	OSCILLATING CAM
13	2R1-136-03	ROTOR	45	2G3-084-01	OSCILLATING GEAR
14	2R5-163-01	BAIL PAWL	46	2M1-061-01	OSCILLATING SILDER
15	2R4-182-01	BAIL TRIP COVER	47	2E5-054-01	OSCILLATING SLIDER RETAINER
16	2E1-015-02	B26-060 SCREW	48	2E2-009-02	F23M-060 SCREW
17	2E2-018-03	B30M-080 SCREW	49	2E1-045-01	A26-080 SCREW
18	2E1-010-01	b30-100 SCREW	50	2G1-069-01	DRIVE GEAR
19	2R2-063-03	BAIL ARM	51	2W1-019-00	071-103 WASHER
20	2C1-034-01	LINE ROLLER COLLAR	52	2Z1-010-05	812-3.5 BALL BEARING
21	2Z1-012-05	407-2.5 BALL BEARING	53	2B2-096-06	BODY COVER ( L )
22	2R6-020-02	LINE ROLLER	54	2E1-005-02	A26-120 SCREW
23	2C2-032-01	LINE ROLLER BUSH	55	2YH-237-08	HANDLE TOTAL ASSEMBLY
24	2YL-155-04	BAIL ASSEMBLY	56	2C3-042-01	HANDLE SCREW SLEEVE
25	2R5-135-01	BAIL TRIP SHAFT	57	2H6-017-02	HANDLE SCREW CAP
26	2W1-199-01	015-027 WASHER	58	2A1-034-04	ANTI-REVERSE LEVER
27	2Q1-096-01	BAIL SPRING	59	2E2-013-02	B20M-060 SCREW
28	2C2-119-01	BAIL SPRING GUIDE	60	2F5-355-04	REAR COVER
29	2R4-183-01	BAIL SPRING COVER	61	2E2-055-01	B23M-050 SCREW
30	2A4-021-01	ONE-WAY CLUTCH INNER TUBE	GQ25005	SPECIAL PARTS	
31	2E2-044-01	A20M-050 SCREW	5	2YT-414-04	SPOOL TOTAL ASSEMBLY
32	2F5-398-01	ROLLER CLUTCH RETAINER			