

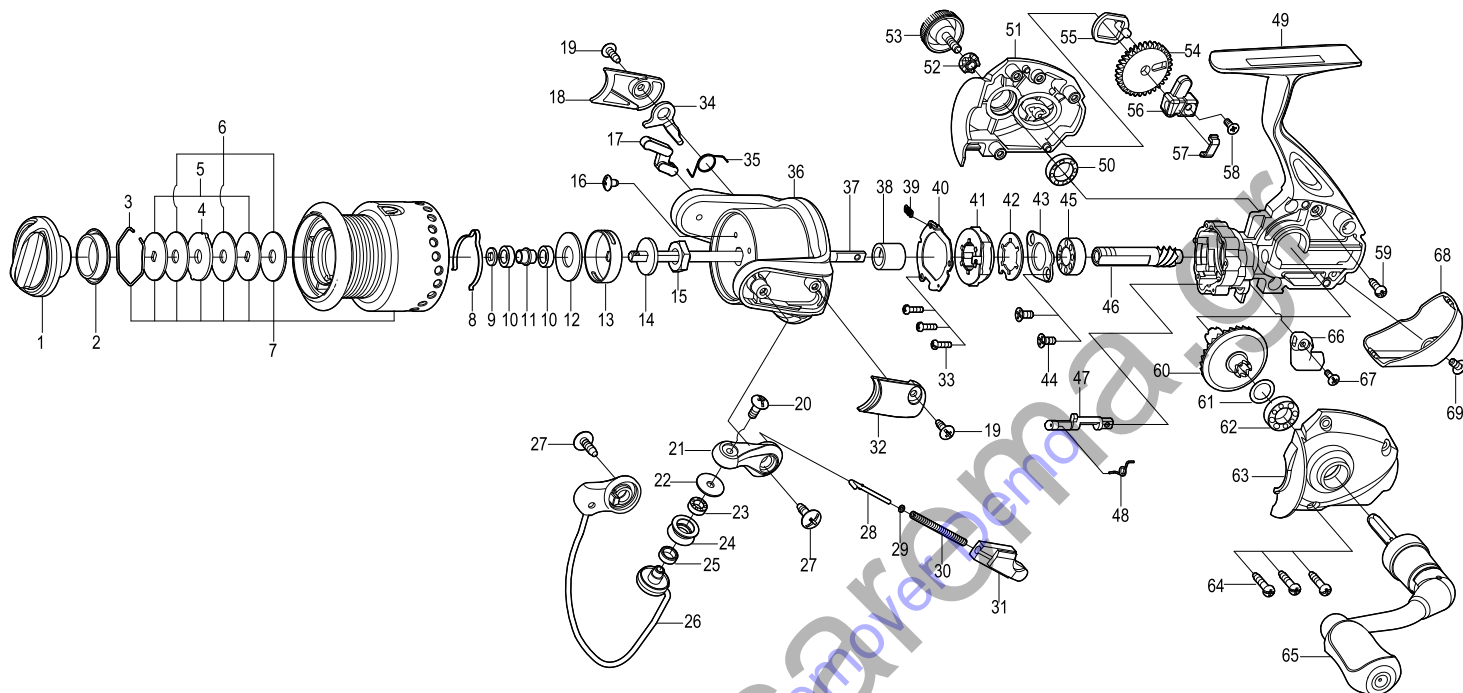


## SPINNING REEL

## GAINER

## GA2000(P) / GA2500(P)

Please order by parts number, not key number  
Bitte, Best.-Nr. angeben (Nicht "key" -nr.)  
Veuillez indiquer le numero de la pièce (Non "key" no.)



### Key NO.

### Parts No.

### Parts name

### Key NO.

### Parts No.

### Parts name

1	2YD-054-09	DRAG KNOB ASSEMBLY	37	2M3-123-01	MAIN SHAFT
2	2E9-019-01	PROOF WATER RING	38	2A4-021-01	ONE-WAY CLUTCH INNER TUBE
3	2E4-009-01	DRAG WASHER RETAINER	39	2Q2-016-01	SPRING
4	2W3-014-01	EARED WASHER	40	2F5-356-01	ROLLER CLUTCH RETAINER
5	2W2-013-02	KEY WASHER	41	2YZ-019-01	ONE-WAY CLUTCH BEARING ASSEMBLY
6	2W1-052-02	050-187 WASHER	42	2F2-037-01	ANTI-REVERSE PAWL
7	2YT-380-51	SPOOL TOTAL ASSEMBLY	43	2F5-212-01	BEARING RETAINER
8	2L3-014-01	CLICK LEAF SPRING	44	2E2-052-02	F26M-080 SCREW
9	2W2-016-01	KEY WASHER	45	2Z1-003-05	714-5 BALL BEARING
10	2Z1-001-05	508-2.5 BALL BEARING	46	2G2-131-01	PINION GEAR
11	2C1-110-01	COLLAR	47	2A2-088-01	ANTI-REVERSE CAM
12	2W1-053-01	080-185 WASHER	48	2Q3-102-01	ANTI-REVERSE SPRING
13	2F8-013-01	CLICK LEAF SPRING HOLDER	49	2YB-216-04	BODY ASSEMBLY
14	2W2-015-01	KEY WASHER	50	2Z1-009-05	711-3 BALL BEARING
15	2E3-007-01	ROTOR NUT	51	2B2-103-02	BODY COVER ( R )
16	2E1-036-01	B26-040 SCREW	52	2C3-042-01	HANDLE SCREW SLEEVE
17	2R5-149-01	BAIL PAWL	53	2H6-001-09	HANDLE SCREW CAP
18	2R4-168-03	BAIL TRIP COVER	54	2G3-084-01	OSCILLATING GEAR
19	2E1-016-02	B26-080 SCREW	55	2M2-018-01	OSCILLATING CAM
20	2E2-018-01	B30M-080 SCREW	56	2M1-061-01	OSCILLATING SLIDER
21	2R2-053-03	BAIL ARM	57	2E5-054-01	OSCILLATING SLIDER RETAINER
22	2C1-034-01	LINE ROLLER COLLAR	58	2E2-009-02	F23M-060 SCREW
23	2Z1-012-05	407-2.5 BALL BEARING	59	2E1-045-01	A26-080 SCREW
24	2R6-020-01	LINE ROLLER	60	2G1-069-01	DRIVE GEAR
25	2C2-032-01	LINE ROLLER BUSH	61	2W1-035-00	080-105 WASHER
26	2YL-136-02	BAIL ASSEMBLY	62	2Z1-010-05	812-3.5 BALL BEARING
27	2E1-010-01	b30-100 SCREW	63	2B2-102-02	BODY COVER ( L )
28	2R5-135-01	BAIL TRIP SHAFT	64	2E1-005-02	A26-120 SCREW
29	2W1-199-01	015-027 WASHER	65	2YH-236-04	HANDLE TOTAL ASSEMBLY
30	2Q1-100-01	BAIL SPRING	66	2A1-026-14	ANTI-REVERSE LEVER
31	2C2-113-01	BAIL SPRING GUIDE	67	2E2-013-02	B20M-060 SCREW
32	2R4-167-03	BAIL SPRING COVER	68	2F5-363-03	REAR COVER
33	2E2-044-01	A20M-050 SCREW	69	2E2-055-01	B23M-050 SCREW
34	2R5-150-01	BAIL TRIP LEVER	GA2500(P)	SPECIAL PARTS	
35	2Q3-108-01	BAIL SPRING	7	2YT-381-51	SPOOL TOTAL ASSEMBLY
36	2R1-126-02	ROTOR			